

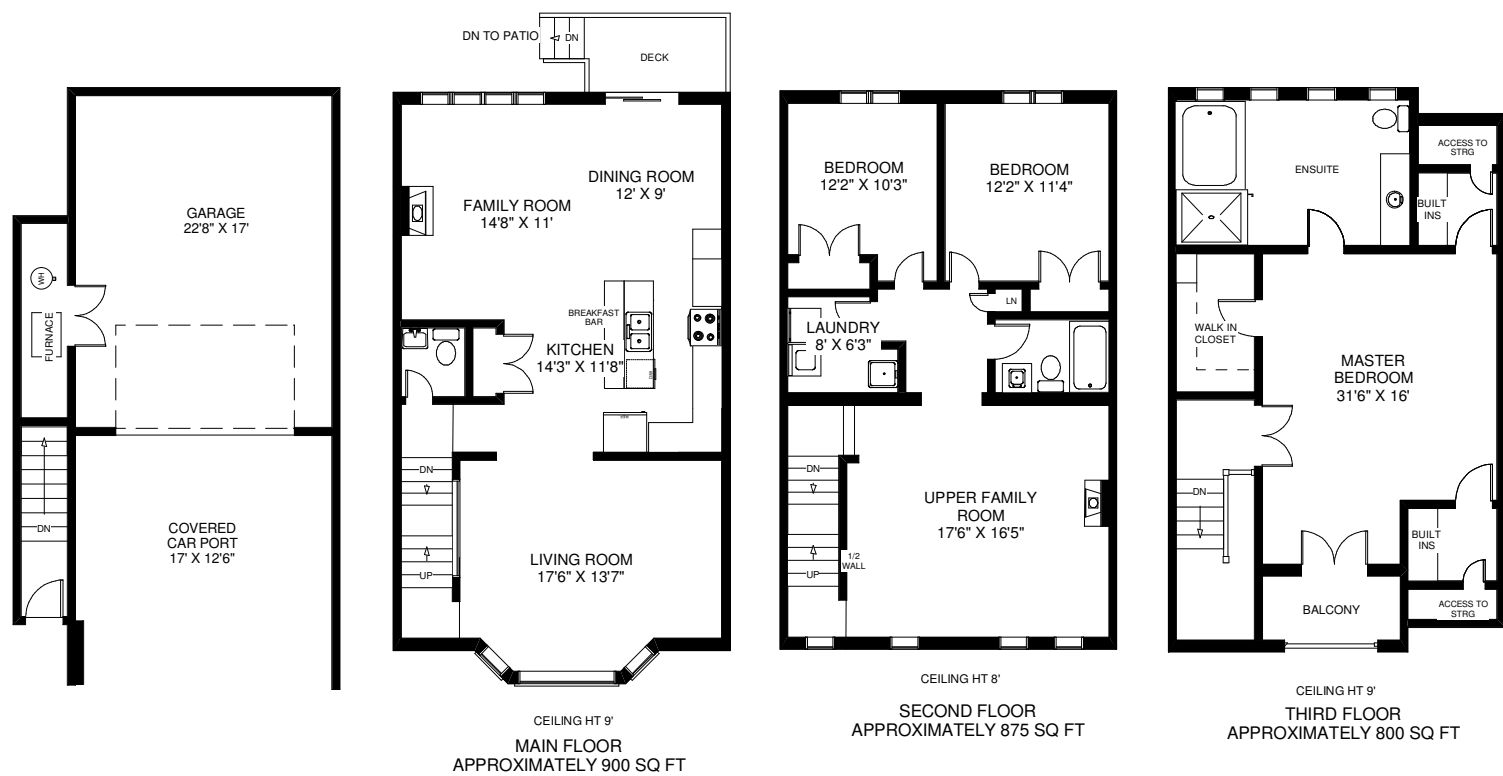


**NICOLE EMMERSON**  
 SALES REPRESENTATIVE  
 nicoleemerson@royallepage.ca  
 Cell: 416.721.6435

Office: 416.762.8255 | Fax: 416.762.8853 | 2320 Bloor St. West, Toronto ON M6S 1P2

*Welcome to*  
**24 GALA LANE**

**24 GALA LANE**



**NICOLE EMMERSON**  
 SALES REPRESENTATIVE  
 nicoleemerson@royallepage.ca  
 Cell: 416.721.6435

More information available at [www.24gala.com](http://www.24gala.com)



Prospective purchaser should satisfy themselves as to the accuracy of the information contained in this feature sheet. All measurements are approximations. Information contained herein is based on information furnished and sources we believe to be reliable but for which we assume no responsibility.



# Welcome to 24 GALA LANE

This stunning executive townhome is nestled in a quiet cul de sac at the end of leafy tree lined street.

## Offering an enormous of space across all three stories, key features include:

- Chef's kitchen with granite counters, high end appliances and large island for food prep and entertaining
- Cozy living room with fireplace open to the kitchen
- Handsome formal dining room for large scale entertaining
- Walkout from kitchen to private backyard and patio space
- Spacious 2nd level family room with fireplace
- 3rd level master suite with walk-in closet and spa-like ensuite
- Ample storage

## Neighborhood amenities:

- **Sanremo Bakery:** People come from far and wide to this famous bakery that has been a fixture in the Stonegate community since 1969
- **Mama Martinos Restaurant:** also a staple in the community for affordable and delicious home cooked Italian food
- **Tom's Dairy Freeze:** some of the best soft serve ice cream anywhere!
- Easy access to a variety of big boxing shopping such as Costco, Sobeys, No Frills, Canadian Tire, Cineplex Theaters, LCBO & IKEA and other smaller shops and restaurants are easily accessible along the Queensway east and west of this location
- **Jeff Healey Park,** bordering the Mimico Creek is minutes on foot just north above the Queensway
- Sherway Gardens Shopping Mall is a 10 minute drive west along The Queensway or west along the Gardiner Expressway
- Easy access to the 427 and the airport west along the Gardiner

## Schools:

### TORONTO DISTRICT SCHOOL BOARD

- Norseman Junior Middle School (JK-8)
- Etobicoke Collegiate Institute (secondary school)
- Karen Kain School of the Arts (6-8)
- Etobicoke School of the Arts (secondary school)

### CATHOLIC DISTRICT SCHOOL BOARD

- St. Louis JMS (JK-8)
- Bishop Allen Secondary School

