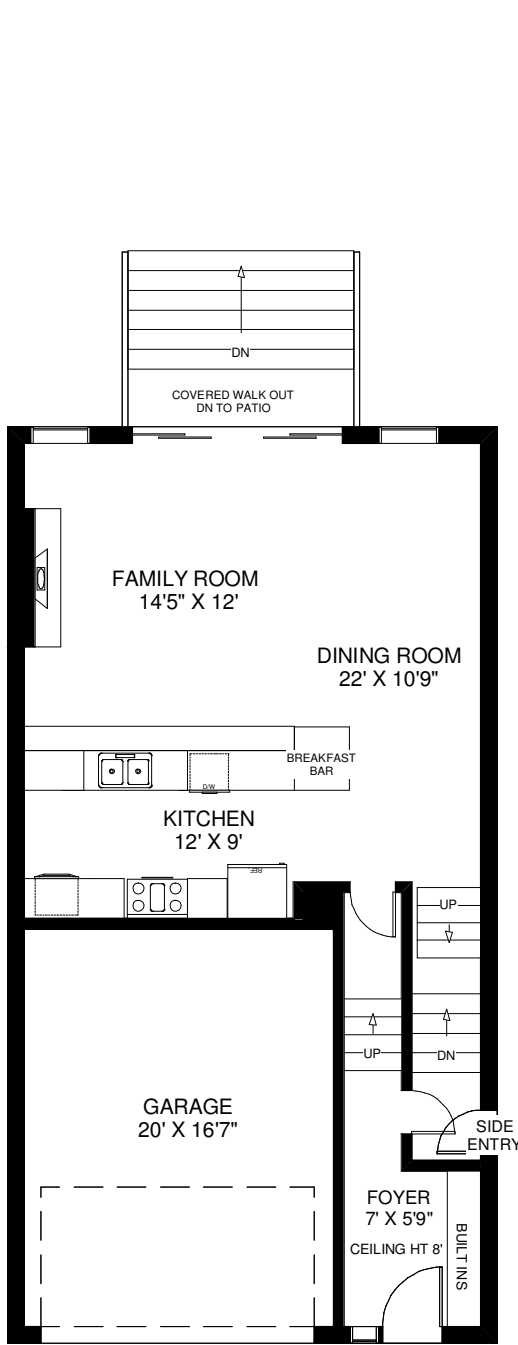
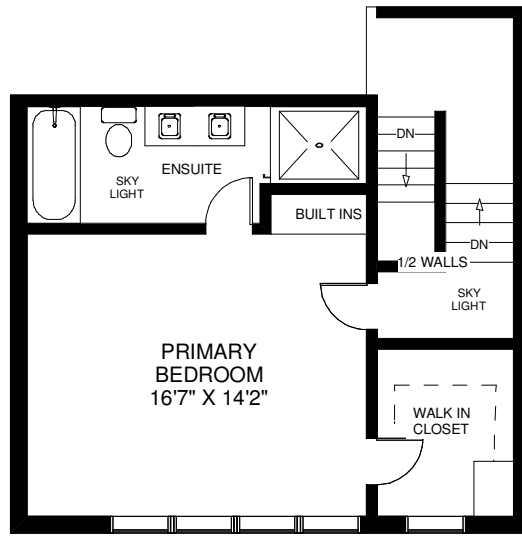


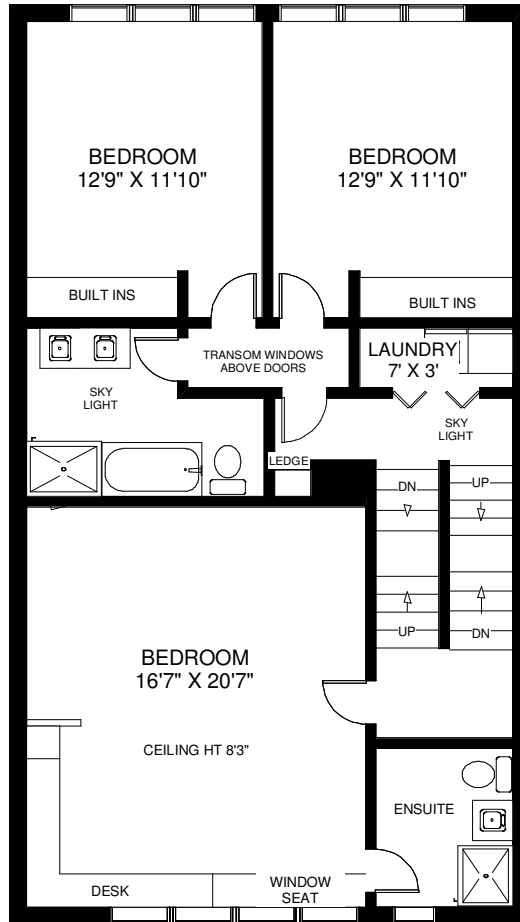
46 STEPHEN DRIVE



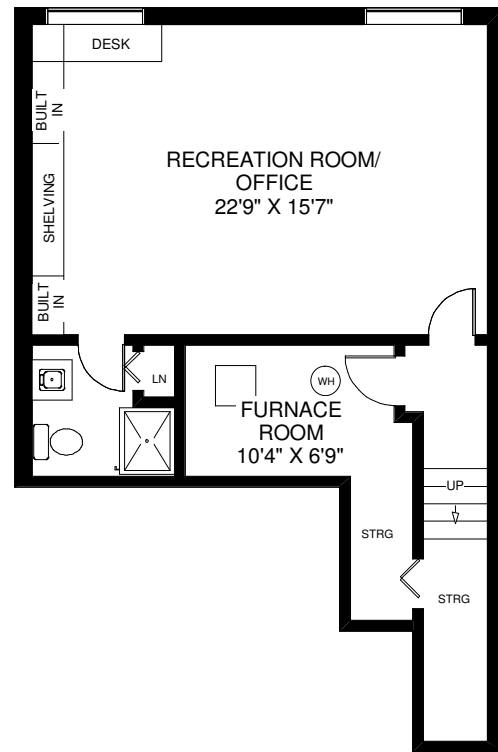
CEILING HT 10'
MAIN FLOOR
APPROXIMATELY 800 SQ FT



CEILING HT 12'
THIRD FLOOR
APPROXIMATELY 600 SQ FT



CEILING HT 13'
SECOND FLOOR
APPROXIMATELY 1,200 SQ FT



CEILING HT 8'
LOWER FLOOR
APPROXIMATELY 670 SQ FT

Note: Measurements & Calculations are approximate.
Provided as a guideline only.